



May 2013 Monthly Report

Incident Information

| Jurisdiction | Fire | | EMS | | Patients Seen | |
|------------------|-----------|------------|------------|-------------|---------------|-------------|
| | Month | 2013 Total | Month | 2013 Total | Month | 2013 Total |
| Madison Township | 3 | 66 | | 79 | | 66 |
| Groveport | 15 | 71 | | 75 | | 65 |
| Canal Winchester | 14 | 66 | | 53 | | 43 |
| Obetz | 0 | 2 | | 3 | | 0 |
| Automatic Aid | 35 | 159 | | 134 | | 89 |
| Total | 67 | 364 | 454 | 1979 | 319 | 1354 |

Transport Information

| Receiving Facility | Number of Patients | 2013 Total |
|--------------------------|--------------------|-------------|
| Riverside | | |
| Doctors West | | |
| Mount Carmel East | | |
| Fairfield Medical Center | | |
| Children's | | |
| OSU East | | |
| OSU Main | | |
| Grant | | |
| Mount Carmel West | | |
| Diley Ridge | | |
| Total Transports | 211 | 1546 |
| Not Transported | 139 | 647 |

Training Information

| Category | Classes | | Hours | |
|--------------|-----------|------------|-----------|------------|
| | Month | 2013 Total | Month | 2013 Total |
| EMS | 6 | 22 | 6 | 43 |
| Fire | 4 | 35 | 8 | 57.75 |
| Other | 1 | 13 | 8 | 65.25 |
| Total | 11 | 70 | 22 | 166 |

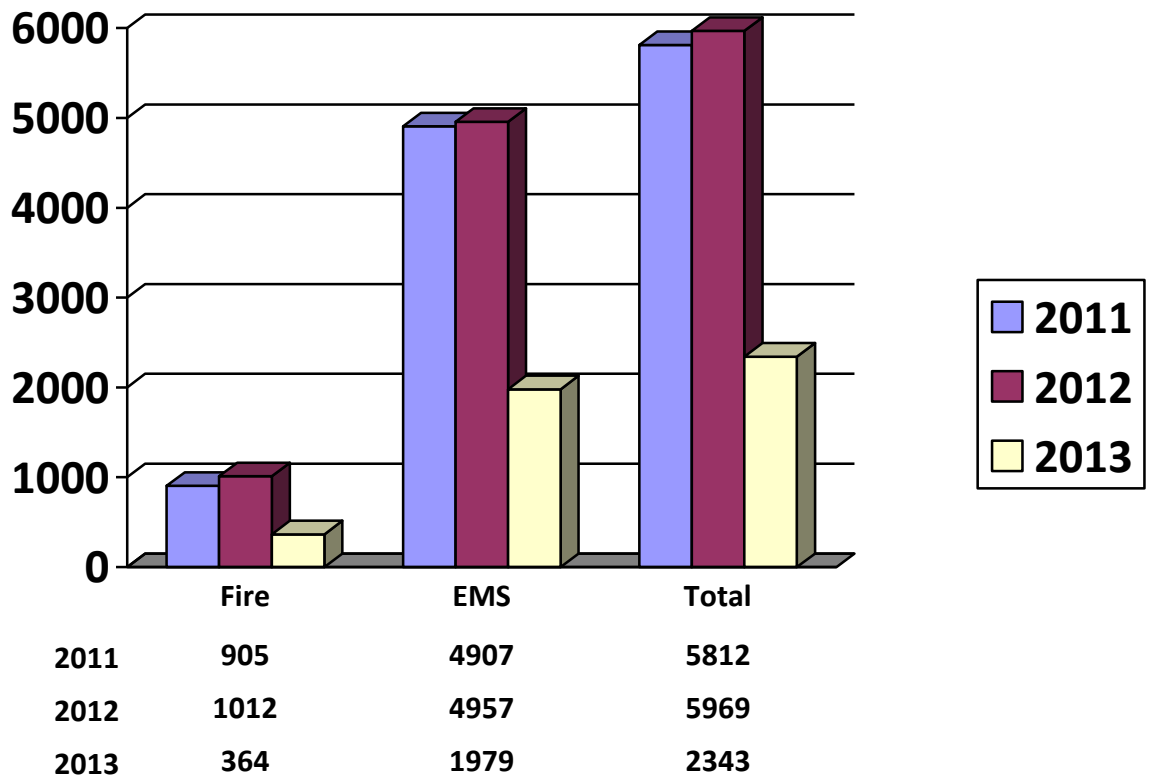
Monthly Staffing Information

| Category | Hours |
|------------------------|--------|
| Part-time Hours Worked | 968.25 |
| Staffing Overtime | 305 |
| FLSA Overtime | 390 |
| Other Overtime | 23.25 |

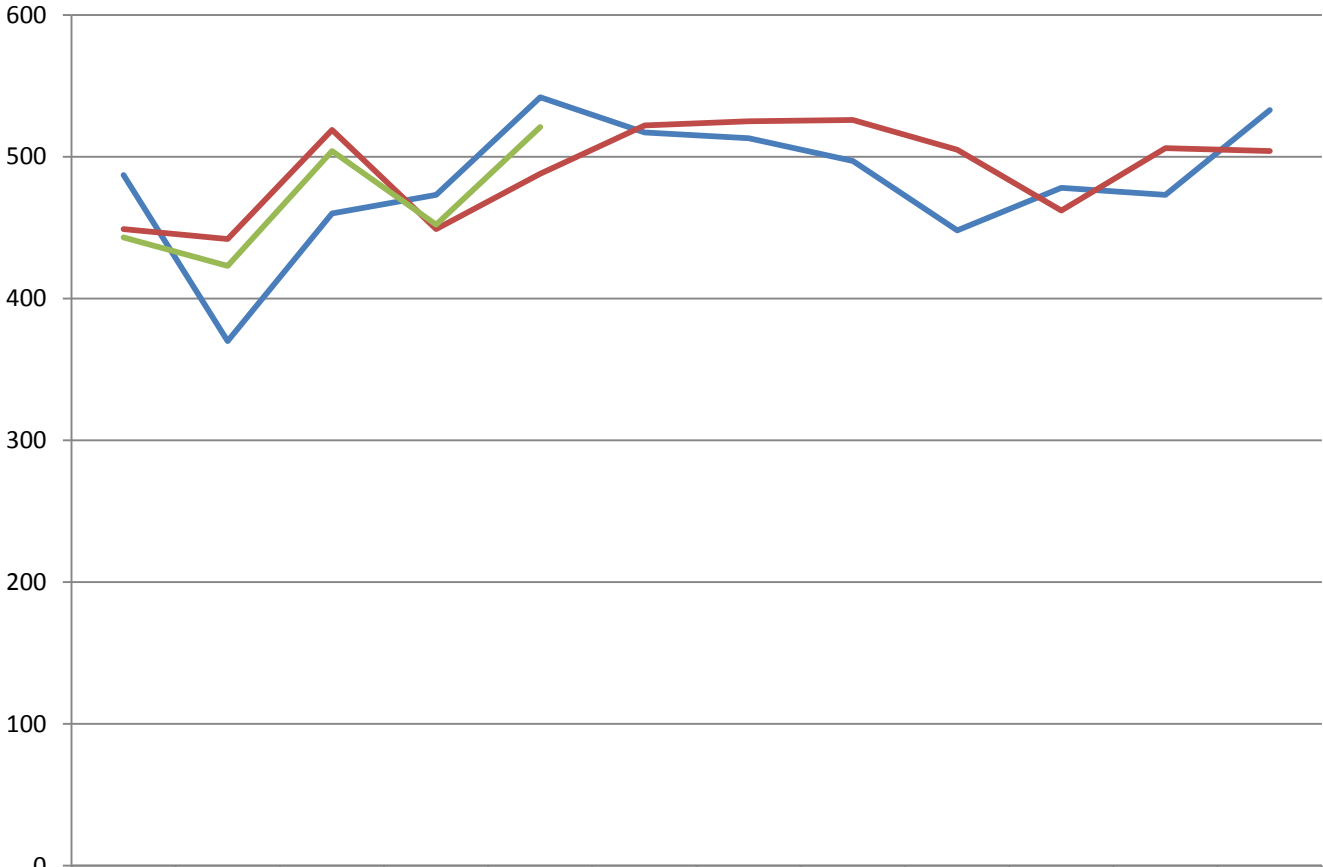
Incident Activity by Unit

| Unit | Current Month | 2013 Total |
|---------------|---------------|------------|
| Battalion 181 | 47 | 247 |
| Engine 181 | 68 | 413 |
| Medic 181 | 239 | 1017 |
| Engine 182 | 46 | 274 |
| Medic 182 | 147 | 664 |

Annual Incident Comparison



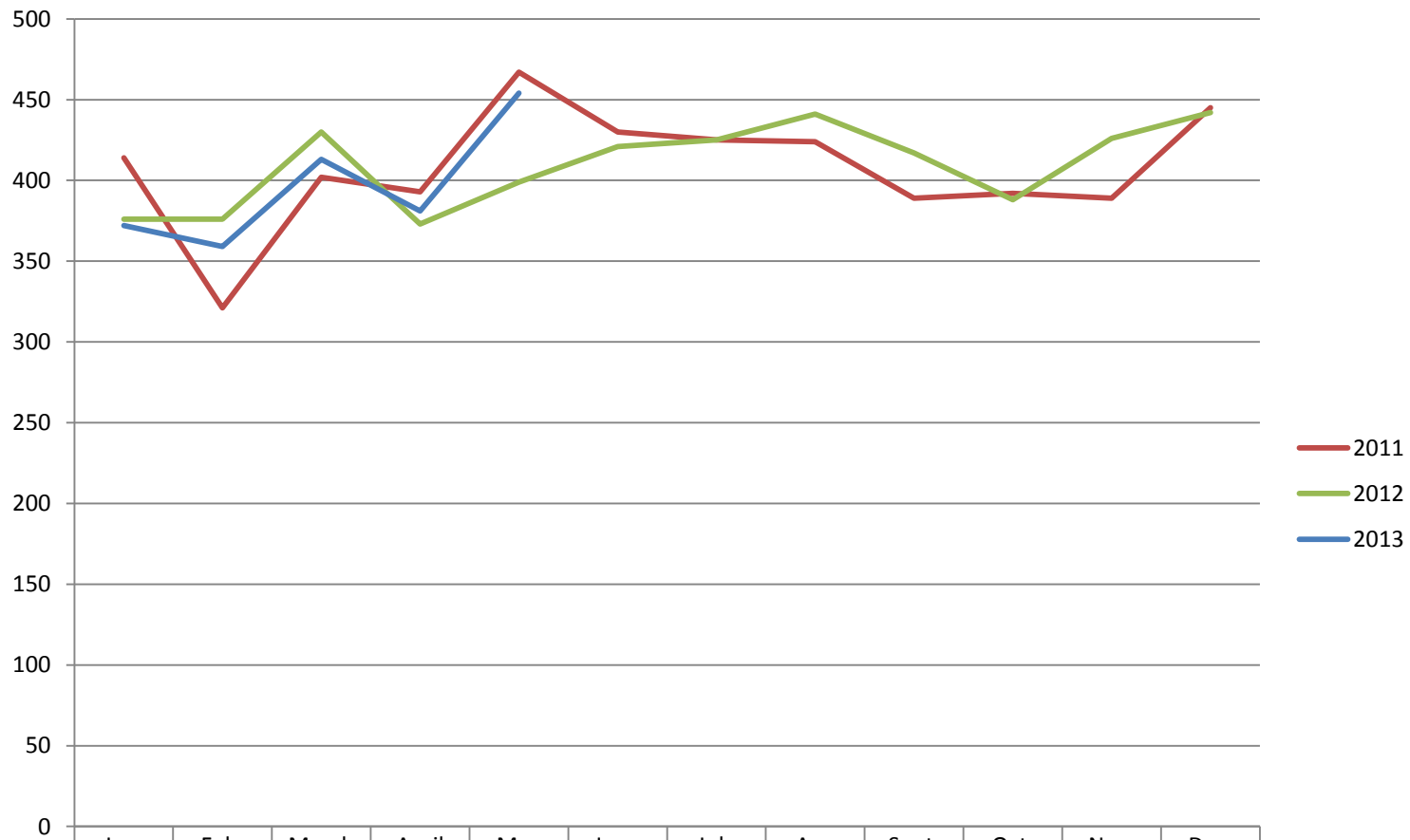
Total Incident Trend



— 2011
 — 2012
 — 2013

| | Jan. | Feb. | March | April | May | June | July | Aug. | Sept. | Oct. | Nov. | Dec. |
|--------|------|------|-------|-------|-----|------|------|------|-------|------|------|------|
| — 2011 | 487 | 370 | 460 | 473 | 542 | 517 | 513 | 497 | 448 | 478 | 473 | 533 |
| — 2012 | 449 | 442 | 519 | 449 | 488 | 522 | 525 | 526 | 505 | 462 | 506 | 504 |
| — 2013 | 443 | 423 | 504 | 452 | 521 | | | | | | | |

EMS Incident Trend



| | Jan. | Feb. | March | April | May | June | July | Aug | Sept. | Oct. | Nov. | Dec. |
|------|------|------|-------|-------|-----|------|------|-----|-------|------|------|------|
| 2011 | 414 | 321 | 402 | 393 | 467 | 430 | 425 | 424 | 389 | 392 | 389 | 445 |
| 2012 | 376 | 376 | 430 | 373 | 399 | 421 | 425 | 441 | 417 | 388 | 426 | 442 |
| 2013 | 372 | 359 | 413 | 381 | 454 | | | | | | | |

Fire Incident Trend

