

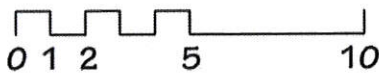
UNIT FEATURES

- 2 Bedrooms / 1 bathroom
- Vaulted Living Room ceiling with ceiling fan
- Master Bedroom suite with private access to Bathroom
- Bathroom with ADA tub/shower, turning radius and rollup sink
- Accessible door with zero threshold at Garage and Covered Porch entries
- Front entry door with peep sight and lighted door bell
- Attached 1-1/2 car Garage with remote automatic opener
- 2 rows of storage shelving located at the rear of the Garage
- "SCS FloorScore" rated vinyl and laminate flooring located in Bathrooms, Kitchen, Laundry and Entries
- "Green Label Carpet" to be provided in Bedrooms and Main Living Area
- Water conserving fixtures throughout unit
- Washer and Dryer hook ups
- 6-panel prefinished hollow core interior doors
- Individual waste wheelers and recycling containers provided for curb side pick up
- Prewired for cable, phone, and internet access
- Energy Star rated Appliances and Equipment
 - a. Refrigerator
 - b. Range
 - c. Microwave/Range hood
 - d. Garbage Disposal
 - e. Dishwasher
 - f. Hot Water Tank
 - g. HVAC with Central Air
 - h. Exhaust fans
- Energy Star Lighting package for interior and exterior lighting fixtures
- Strategically placed task lighting in Kitchen and Master Bath
- Low-E argon single hung windows with double latch



FLOOR PLAN - TWO BEDROOM UNIT

867 SQ. FT. - NET | 911 SQ. FT. - GROSS



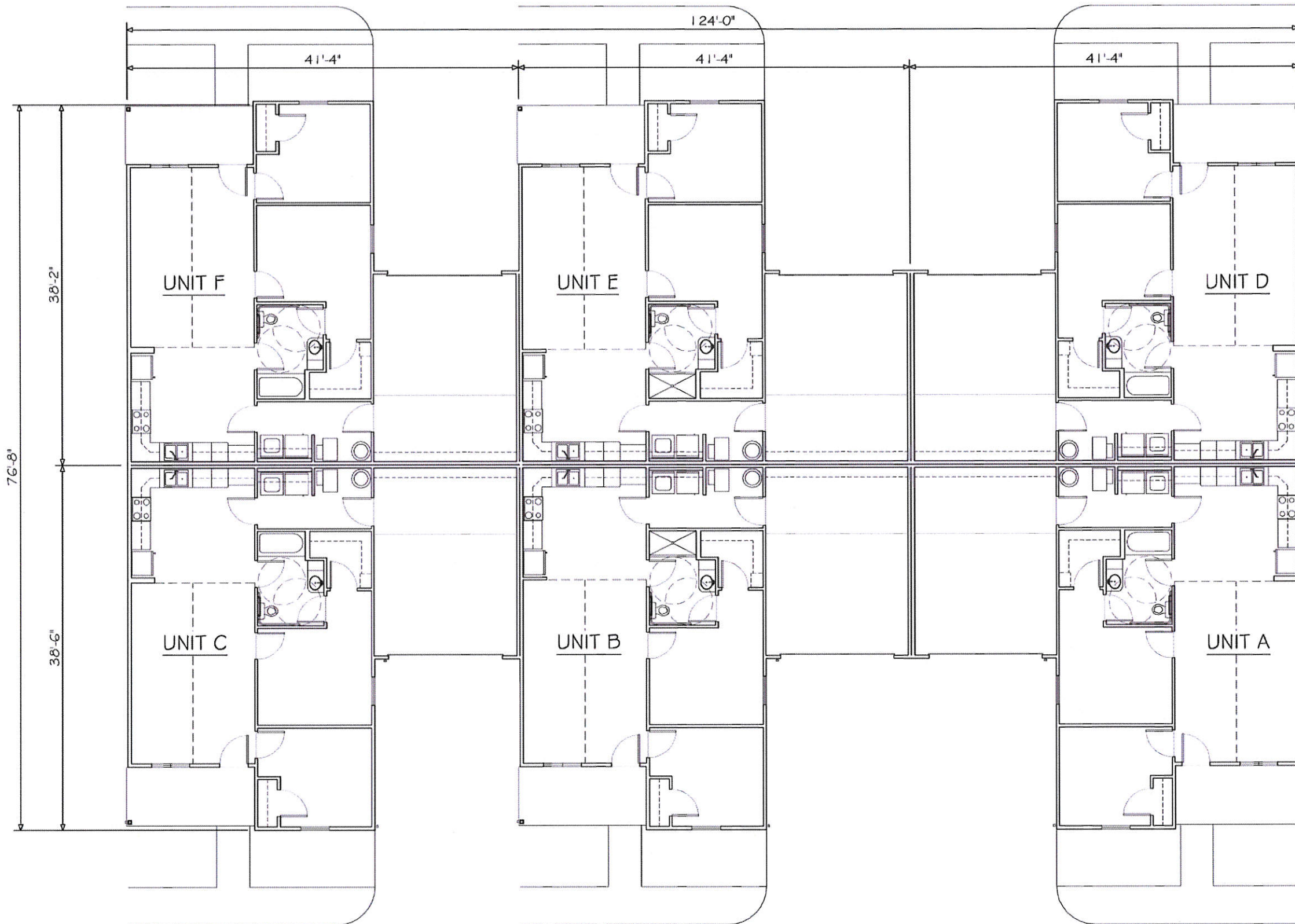
carpico
design

RYAN M. CARPICO
ARCHITECT
ryan@carpicodesign.com
3995 TOWNSHIP RD. 70
SOMERSET, OH 43783
740.974.7119

a GROVEPORT SENIOR HOUSING II DEVELOPMENT
GROVEPORT SENIOR VILLAGE - PHASE II
GROVEPORT, OH

DATE: 10/01/15
PROJECT NO.: 015-016
DRAWN BY: RMC

A1



FLOOR PLAN - BUILDING TYPE 6B

0 10 20 FEET

carpico design

RYAN M. CARPICO
ARCHITECT

ryan@carpicodesign.com

3995 TOWNSHIP RD. 70
SOMERSET, OH 43783
740.974.7119

a GROVEPORT SENIOR HOUSING II DEVELOPMENT
GROVEPORT SENIOR VILLAGE - PHASE II
GROVEPORT, OH

DATE: 10/01/15
PROJECT NO.: 015-016
DRAWN BY: RMC

A2



RYAN M. CARPICO
ARCHITECT

ryan@carpicodesign.com

3995 TOWNSHIP RD. 70
SOMERSET, OH 43783
740.974.7119

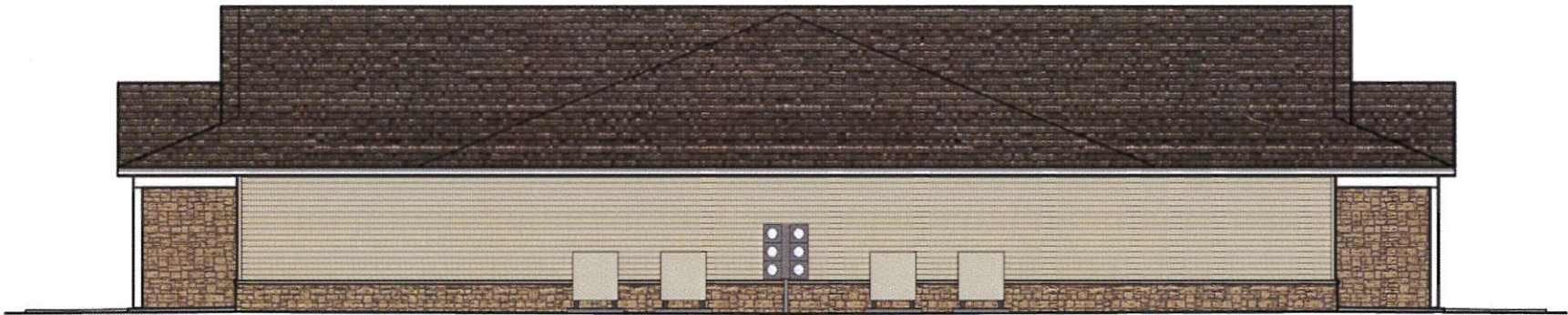
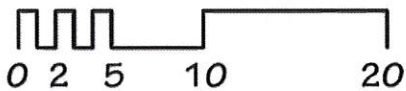
a GROVEPORT SENIOR HOUSING II DEVELOPMENT
GROVEPORT SENIOR VILLAGE - PHASE II
GROVEPORT, OH

DATE: 10/01/15
PROJECT NO.: 015-016
DRAWN BY: RMC

A3



FRONT ELEVATION
REAR ELEVATION IDENTICAL

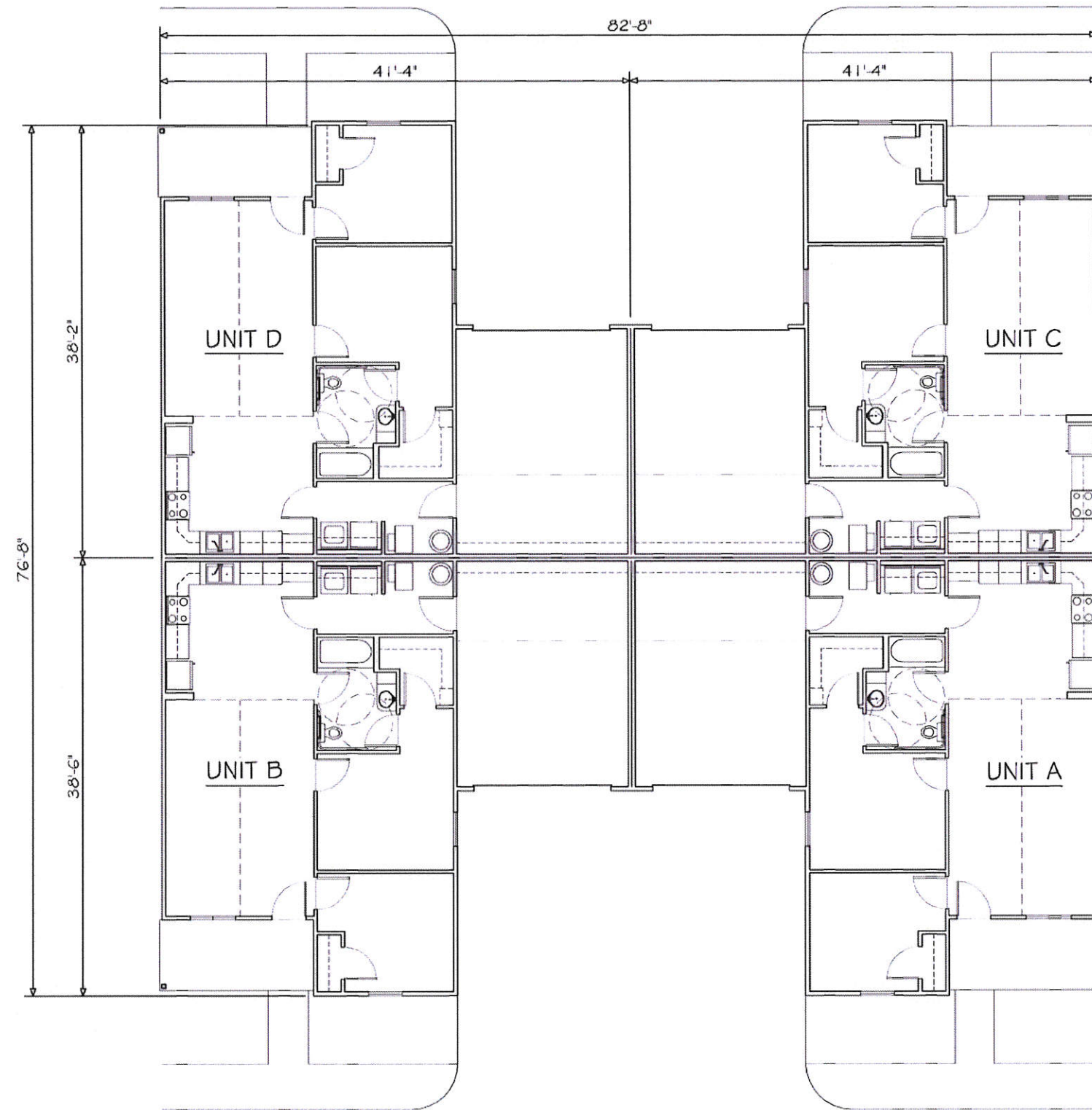


SIDE ELEVATION
OPPOSITE SIDE ELEVATION IDENTICAL

BUILDING TYPE 6B

ELEVATION FEATURES

- 30 yr dimensional roof shingles
- Cultured stone veneer accents
- Maintenance-free vinyl siding
- Motion sensor lighting at front porch entry
- Dusk to dawn security light above garage door and post light at each unit
- Gutters and downspouts connected to underground storm sewer



FLOOR PLAN - BUILDING TYPE 4B

0 10 20 FEET



RYAN M. CARPICO
ARCHITECT

ryan@carpicodesign.com

3995 TOWNSHIP RD. 70
SOMERSET, OH 43783
740.974.7119

a GROVEPORT SENIOR HOUSING II DEVELOPMENT
GROVEPORT SENIOR VILLAGE - PHASE II
GROVEPORT, OH

DATE: 10/01/15
PROJECT NO.: 015-016
DRAWN BY: RMC

A4



RYAN M. CARPICO
ARCHITECT

ryan@carpicodesign.com

3995 TOWNSHIP RD. 70
SOMERSET, OH 43783
740.974.7119

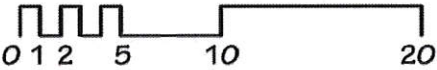
a GROVEPORT SENIOR HOUSING II DEVELOPMENT
GROVEPORT SENIOR VILLAGE - PHASE II
GROVEPORT, OH

DATE: 10/01/15
PROJECT NO.: 015-016
DRAWN BY: RMC

A5



FRONT ELEVATION
REAR ELEVATION IDENTICAL



SIDE ELEVATION
OPPOSITE SIDE ELEVATION IDENTICAL

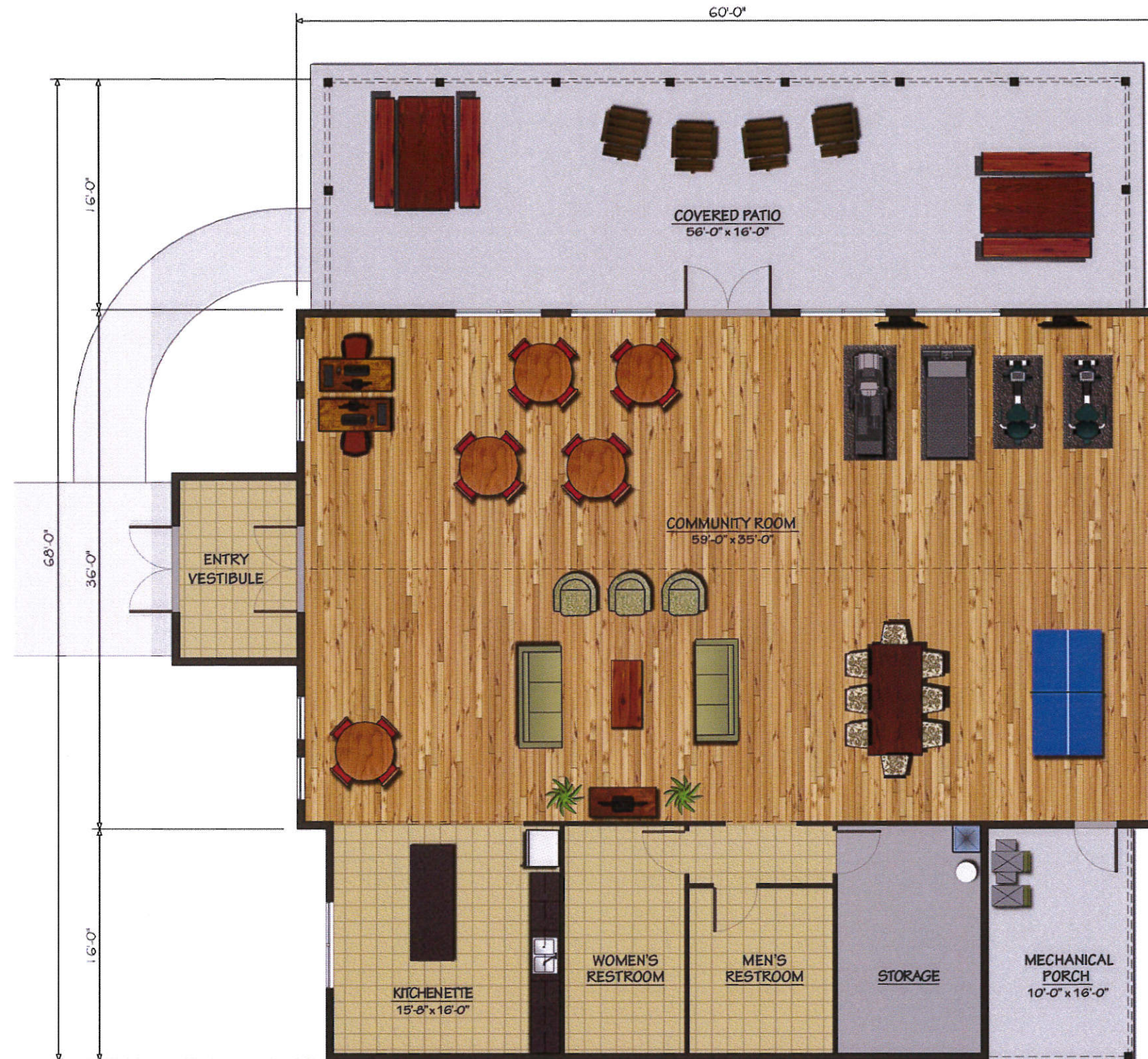
BUILDING TYPE 4B

ELEVATION FEATURES

- 30 yr dimensional roof shingles
- Cultured stone veneer accents
- Maintenance-free vinyl siding
- Motion sensor lighting at front porch entry
- Dusk to dawn security light above garage door and post light at each unit
- Gutters and downspouts connected to underground storm sewer

COMMUNITY BUILDING AMENITIES

- "Wii" gaming system will be provided to encourage group activities with virtual golf, bowling, tennis and additional interactive games
- Large flat screen television with DVD system for movie nights and sporting events
- Attached 900sf Covered Patio with picnic tables and propane grill
- Vaulted ceiling with ceiling fans in Community Room
- Accessible Bathrooms with turning radius and rollup sink
- Accessible doorway with zero threshold at all building entries
- "SCS Floor Score" rated vinyl and laminate flooring located in Bathrooms, Kitchenette and Entry
- "Green Label Carpet" to be provided
- Water conserving fixtures throughout
- 6-panel prefinished hollow core interior doors
- Prewired for cable, phone, and internet access
- Energy star rated Appliances and Equipment
 - a. Refrigerator
 - b. Garbage Disposal
 - c. Dishwasher
 - d. Hot Water Tank
 - e. HVAC with Central Air
 - f. Exhaust fans
- Energy Star Lighting Packaged for interior and exterior lighting fixtures
- Strategically placed task lighting in Kitchenette
- Low-E argon single hung windows with double latch



FLOOR PLAN - COMMUNITY BUILDING

4067 SQ. FT. - GROSS

0 1 2 5 10 20 FEET

carpico
design

RYAN M. CARPICO
ARCHITECT

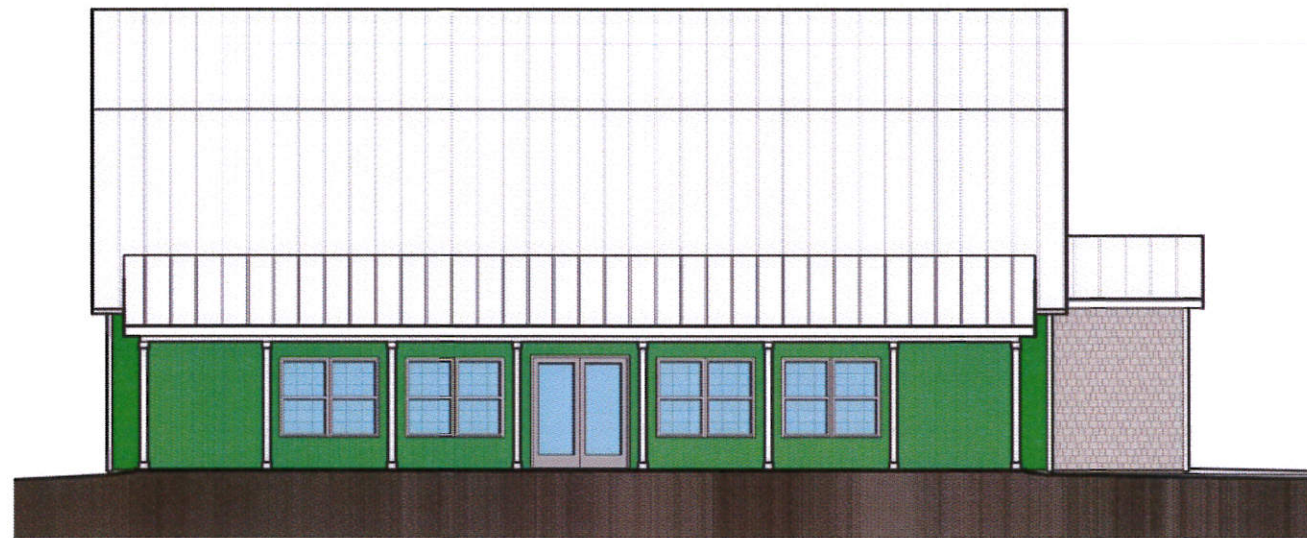
ryan@carpicodesign.com

3995 TOWNSHIP RD. 70
SOMERSET, OH 43783
740.974.7119

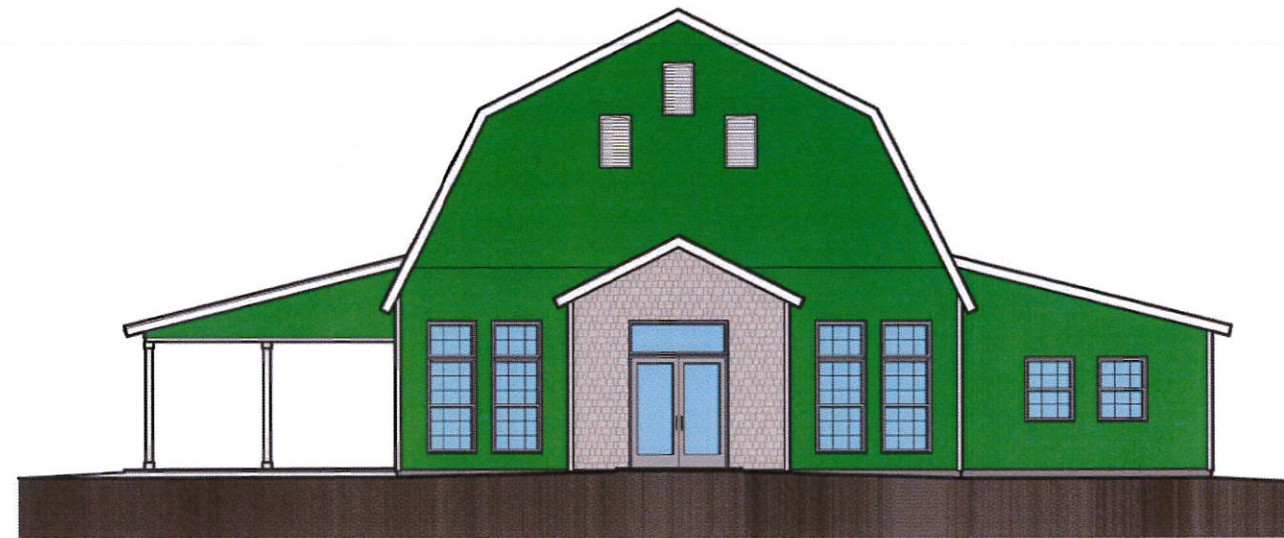
a GROVEPORT SENIOR HOUSING II DEVELOPMENT
GROVEPORT SENIOR VILLAGE - PHASE II
GROVEPORT, OH

DATE: 10/01/15
PROJECT NO.: 015-016
DRAWN BY: RMC

A6



SIDE ELEVATION

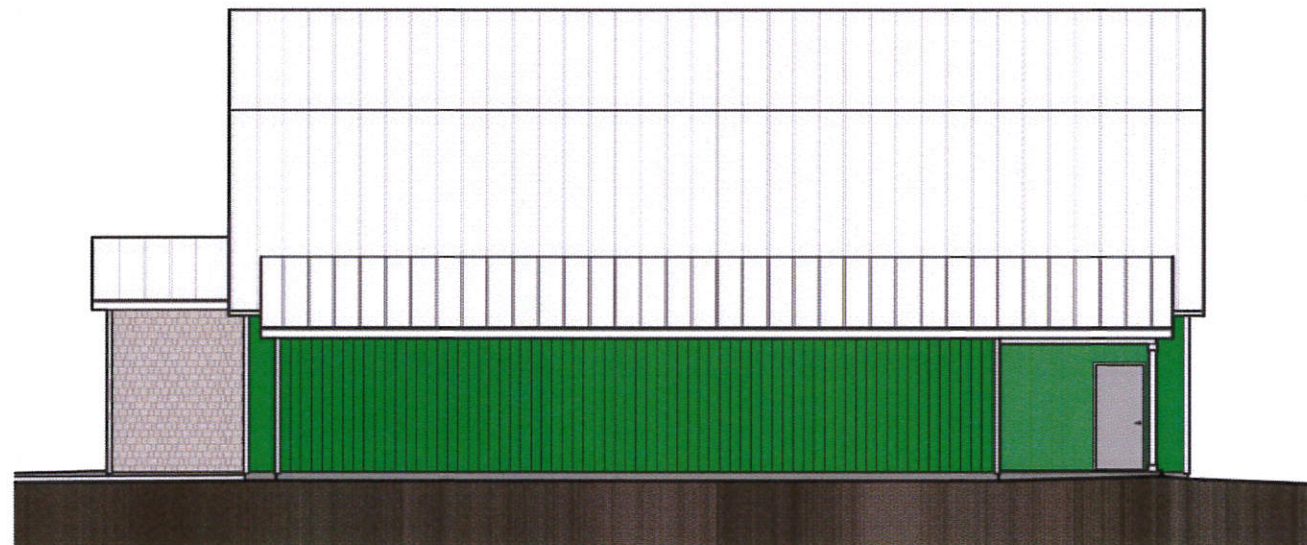


FRONT ELEVATION

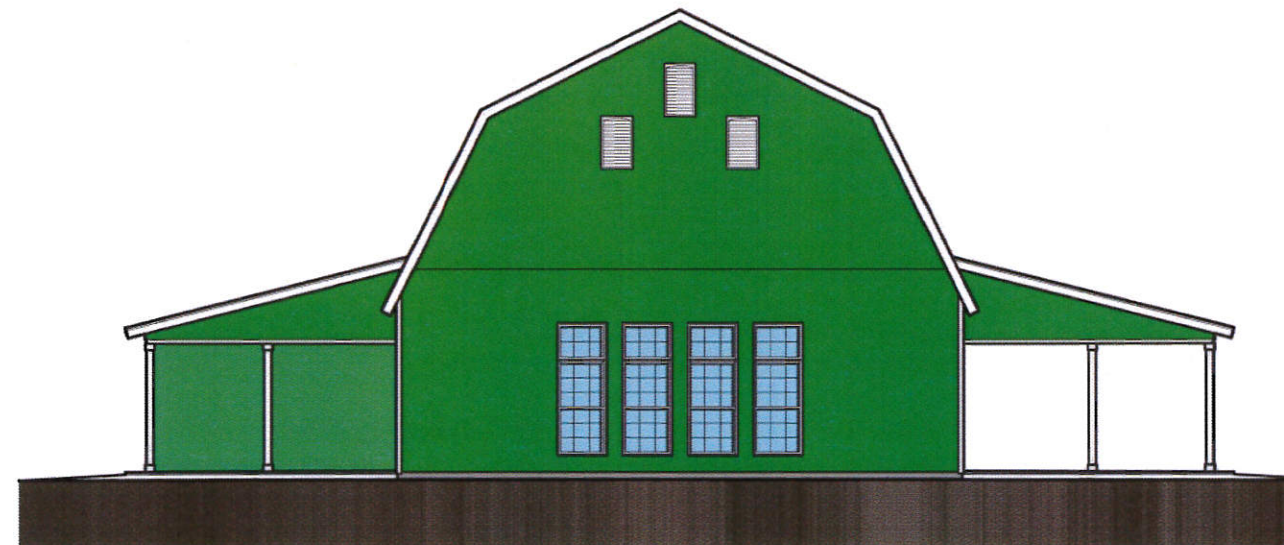
COMMUNITY BUILDING

EXTERIOR FEATURES

- Standing seam metal roofing
- Dusk to dawn post lights adjacent entries and security light at maintenance garage
- Maintenance-free vinyl siding
- Gutters and downspouts connected to underground storm sewer



SIDE ELEVATION



REAR ELEVATION



RYAN M. CARPICO
ARCHITECT

ryan@carpicodesign.com

3995 TOWNSHIP RD. 70
SOMERSET, OH 43783
740.974.7119

a GROVEPORT SENIOR HOUSING II DEVELOPMENT
GROVEPORT SENIOR VILLAGE - PHASE II
GROVEPORT, OH

DATE: 10/01/15
PROJECT NO.: 015-016
DRAWN BY: RMC

A7

